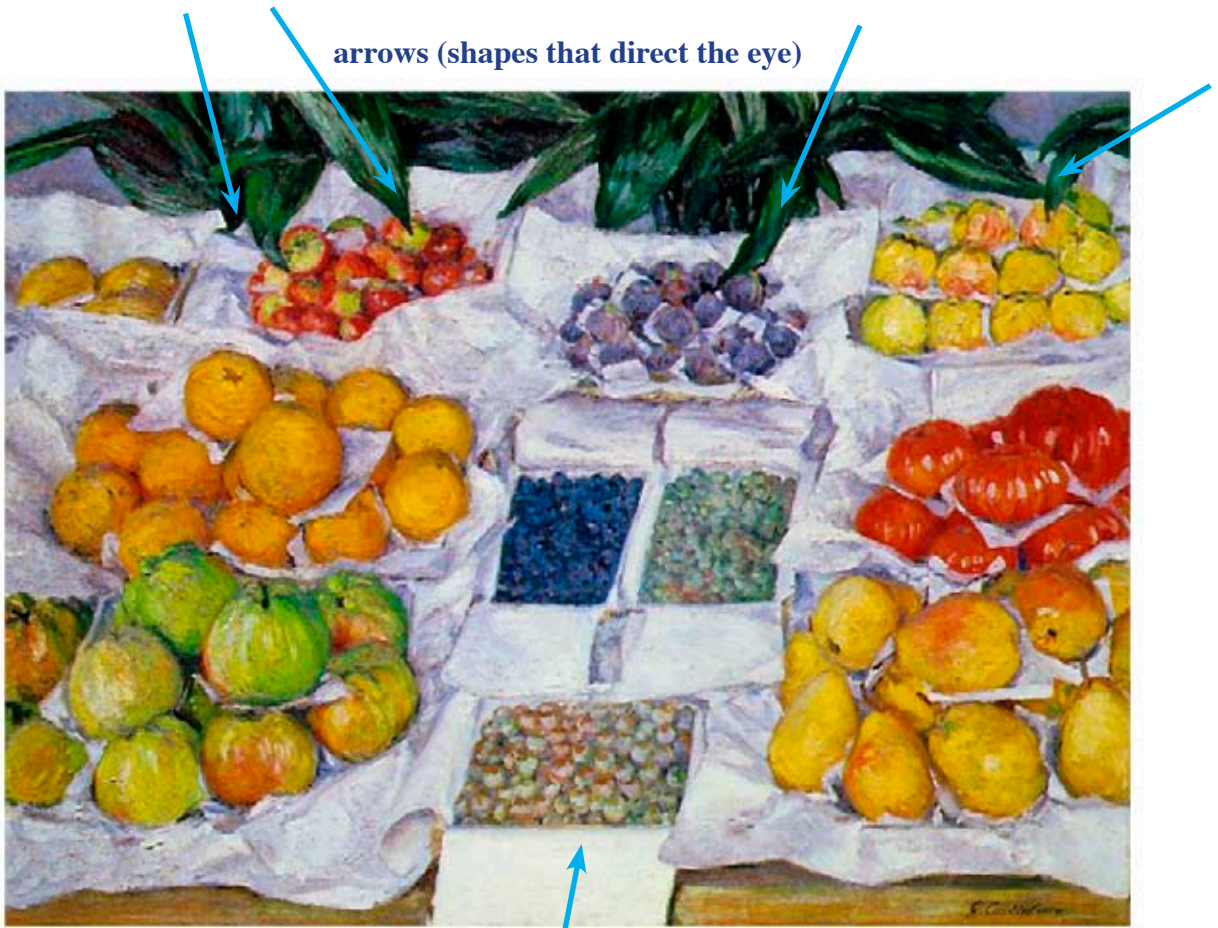


Fruit Displayed on a stand, Gustave Caillebotte, c.1881-2
Oil on canvas, 30 1/8 x 39 5/8 in., Museum of Fine Arts, Boston

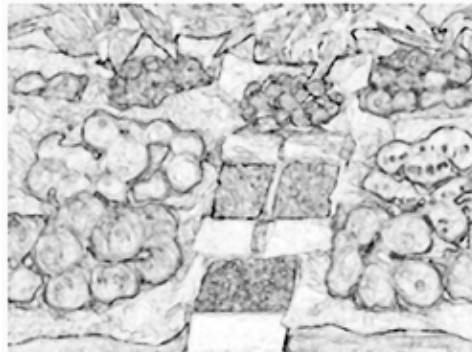


threshold (path for the viewer to enter the composition)

Some approaches to analyzing an artwork:



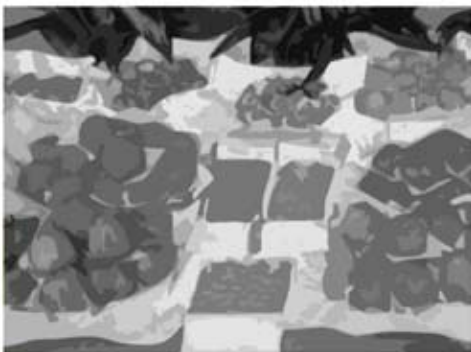
Colors



Lines (edges)



Shapes



Values (lights and darks)



“T” composition